

User Manual



Rel 1.2

Ultimo Agg.: 18/04/2004

Nome doc. Manuale utenteinglese.doc

Index

1.	Introduction.....	3
2.	Installation Vcn Viewer	3
3.	SmartFTP installation.....	3
4.	Remote access installation.....	4
5.	Change recording video	4
5.1	Connection local lan.....	4
5.2	Connection to “Directory display” computer	7
5.3	Connection by remote access	8
6.	Password change	9
6.1	Vnc Password.....	9
6.2	Ftp password	10
7.	IP Change	13
7.1	IP Lan Change.....	13
7.2	IP ”Input connections” change	15
8.	Note ADSL	16

1. Introduction

This user manual is a guide to the installation and to the use of programs for the remote control of a pc connected to a display. Programs utilized for the administration of pc are:

SmartFtp: a tool for the file transfer

Vnc: a tool for the remote control

IMPORTANT: IP addresses and password used in this manual are installed during the configuration in production. REMEMBER to use the identify already set off.

Ip Default :

Ip:	Collegato a :
10.0.100.210	Lan 1
10.0.100.211	Lan 2
10.0.100.212	Lan 3
10.0.100.220	Lan wireless on port USB
10.0.100.230	Input remote connect used by: analog modem, ISDN modem ,gsm modem and GPRS modem.

2. Installation Vcn Viewer

This program is used to connect by serial port, parallel port, modem or local lan, to a remote computer used for the management of display. The program on the “ Display direction” Cd rom in the directory Vnc Viewer must be copied on a hard disk of your computer. To execute this operation it is necessary to follow these instructions:

- 1) Open the page relating the hard disk by the local window “ Computer resources” (normally called “Local disk C:”).
- 2) Create a new page with the name ”Vnc Viewer” by the right key of your mouse.
- 3) Copy the program “vnc-3.3.7-x86_win32_viewer.exe”
- 4) Create a connection to the program and put it on the desktop of your computer.

3. SmartFTP installation

The program permits to copy on the computer used by the display direction new video series. Users that installed on their computer other FTP programs didn't to execute this procedure. To install SmartFtp program it has to execute the following operations:

- 1) Open “Computer resources” to visualize the contents of Cd-rom “Display direction”
- 2) Put in the SmartFTP directory
- 3) Execute “SFTPFull.exe” program. Follow the instructions on the screen

- 4) At the end of the installation execute the program “ResIta.exe” that is in the “Display direction” Cd-rom.
- 5) Follow the instructions on the screen.
- 6) At the first execution of the program it appears a form of general configuration of the program . DON’T change the statements.

4. Remote access installation

To be connected by modem or serial port it is necessary a connection Remote Access with the name Eurodisplay.

Note To create this connection it is necessary to follow the Windows instructions.

5. Change recording video

To change the recording video sequences it must execute the following operations:

5.1 Connection local lan

- 1) Execute SmartFTP program (or a similar program)

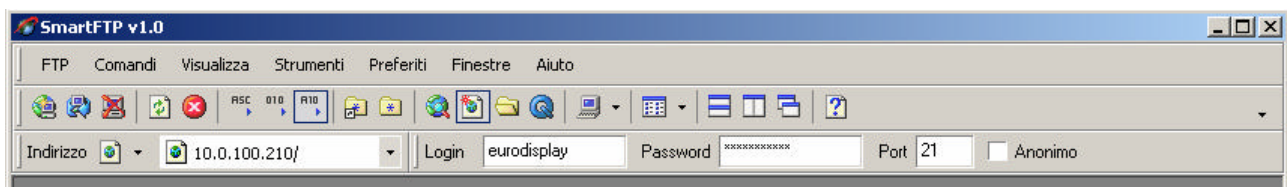


- 2) Set the address of the remote computer “Remote Access Service (RAS)”

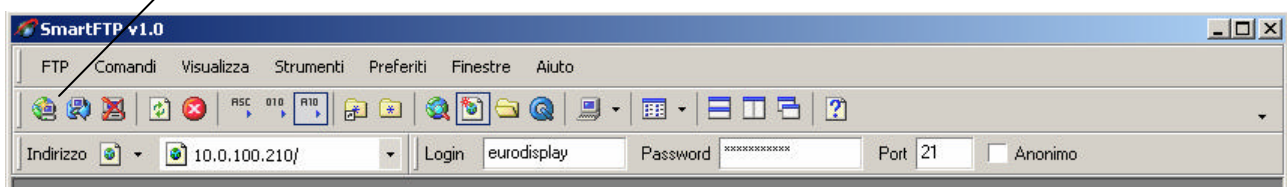
Address: 10.0.100.210

Login: eurodisplay

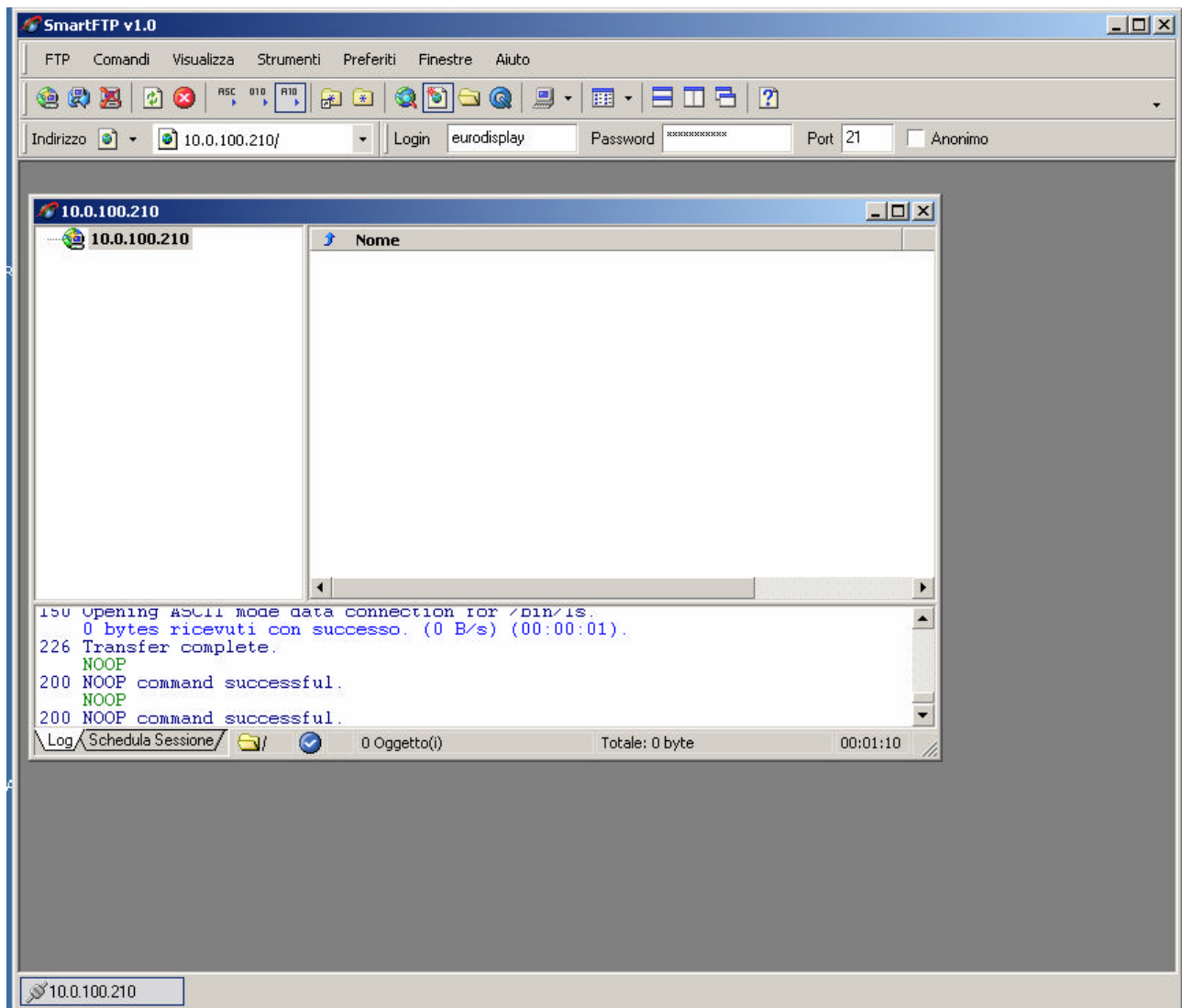
Password: eurodisplay



- 3) Push the first key, on the left of images under the menu of the program “Connection”

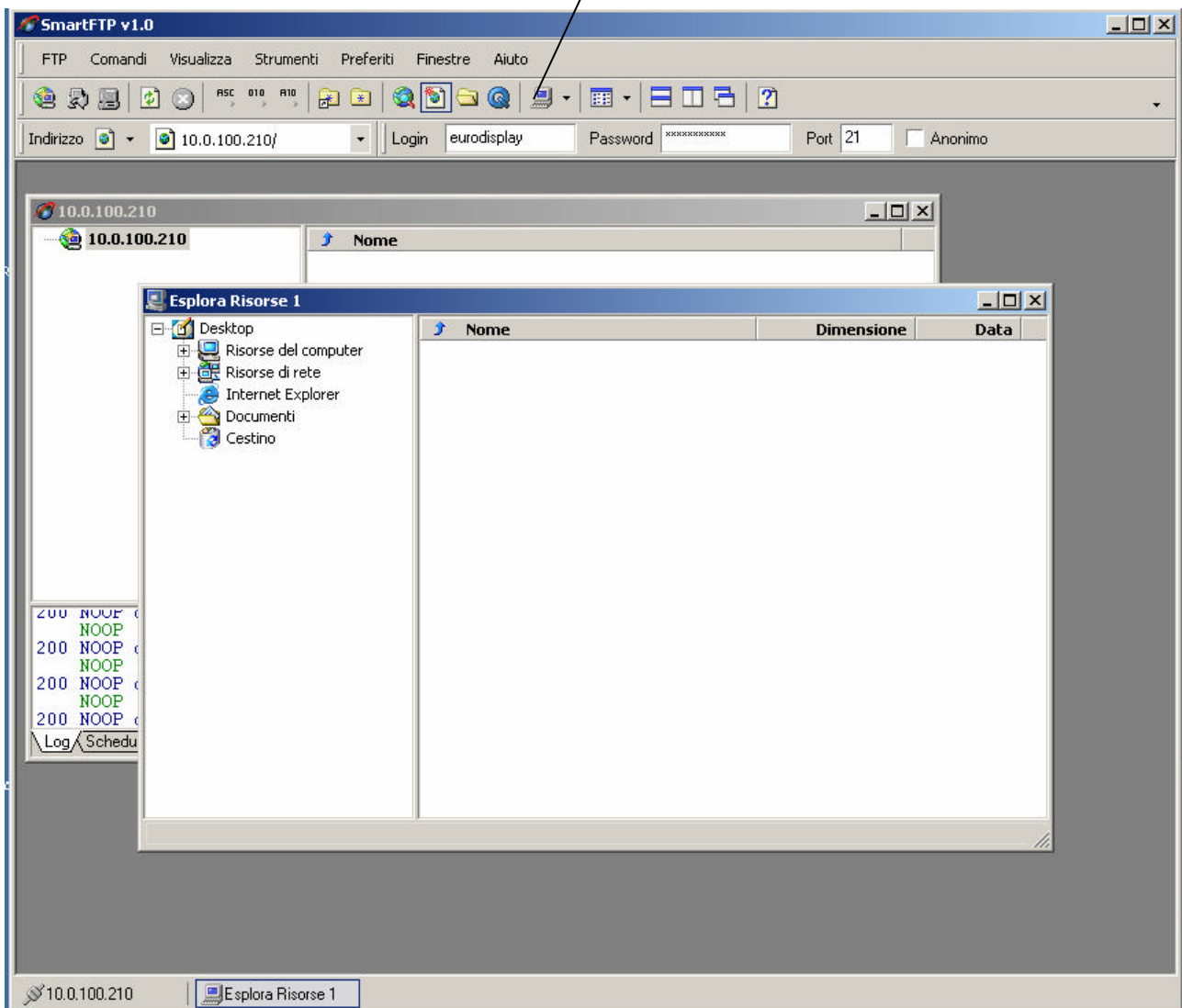


4) If the connection is over in a correct way, we can see the following form.

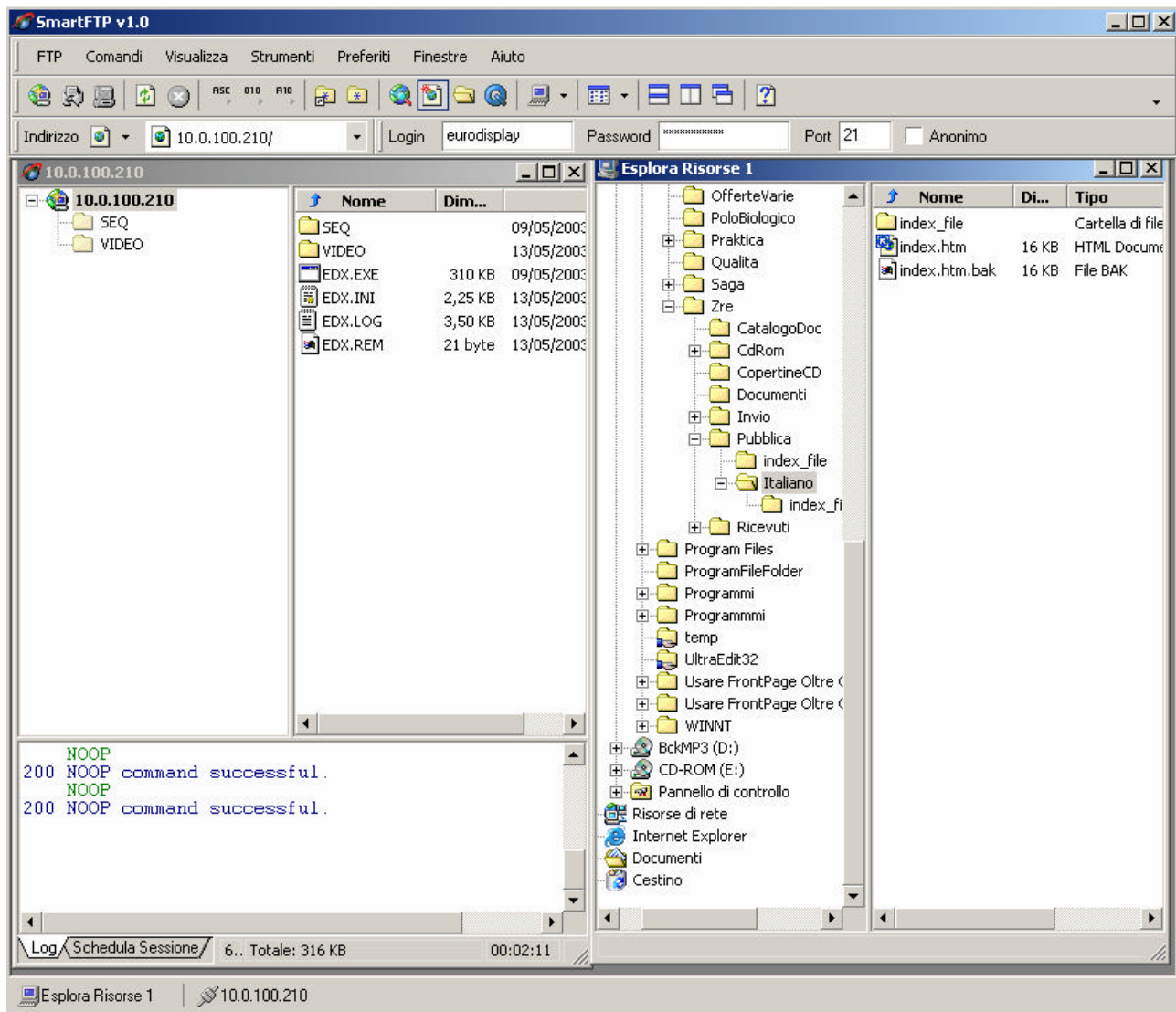


- 5) To shift the desired files it must open the computer's icon "Explore resource"

Explore resources



- 6) By "copy and paste" it is necessary to shift the desired files in the directory "Seq" or "Video"



7) Close SmartFPT program

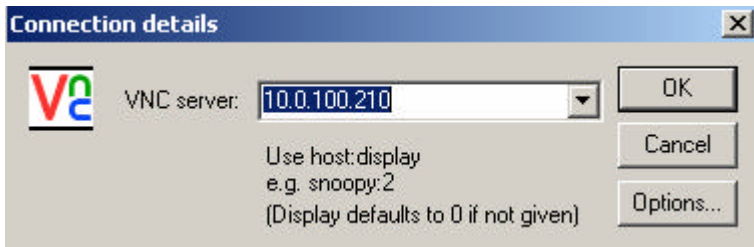
5.2 Connection to “Directory display” computer

To connect to remote computer it has to execute the following operations:

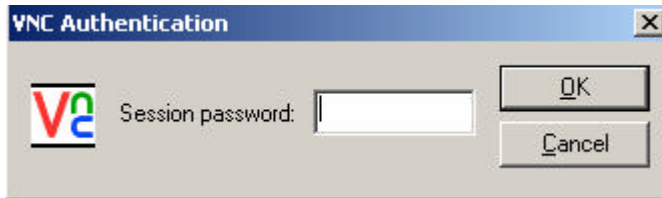
1) Start vnc-3.3.7-x86_win32_viewer.exe program from the connection on desktop



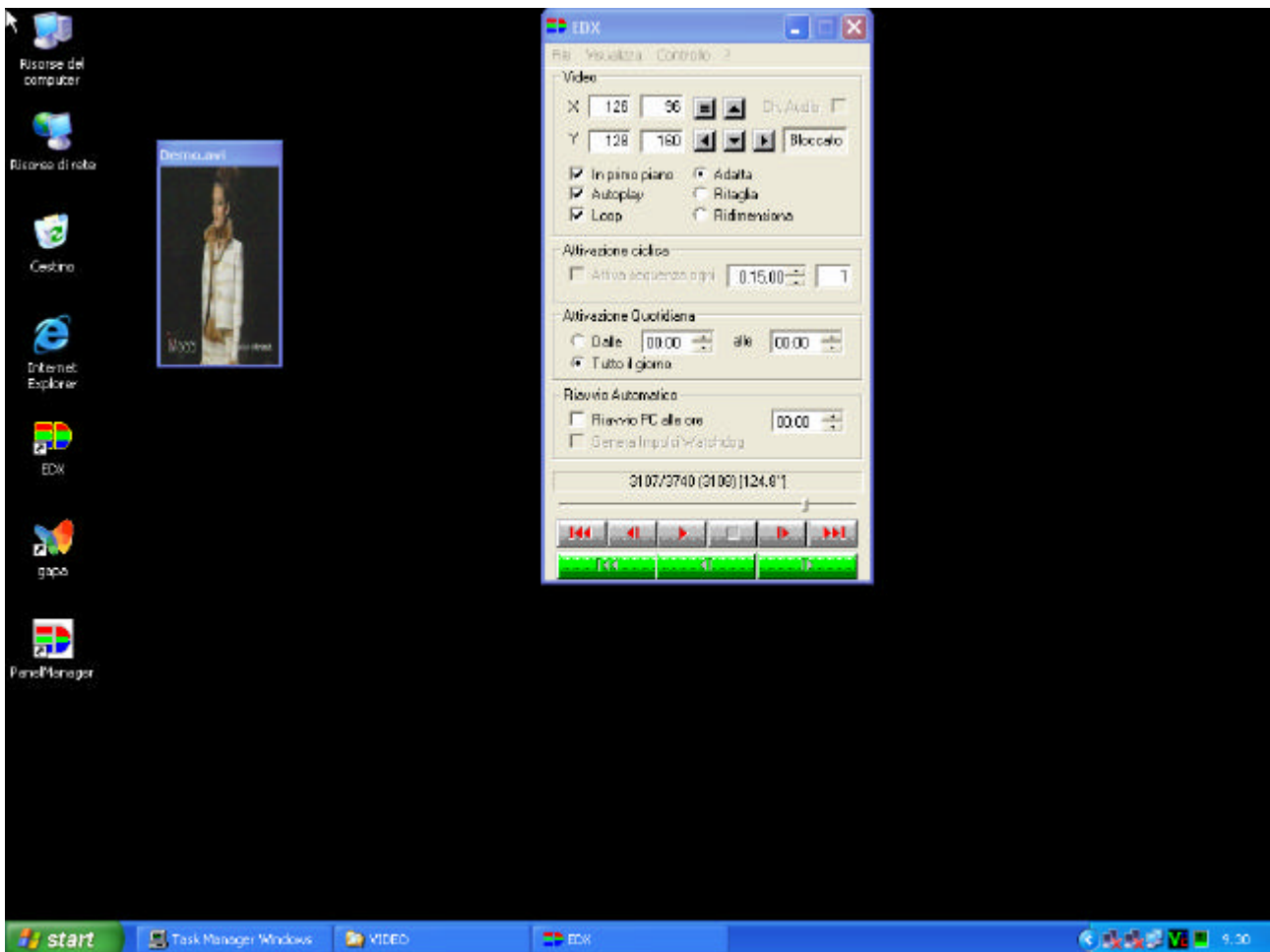
1) Open the connection introducing the address of remote pc (10.0.100.210)



2) Introduce the password (eurodisplay)



3) If a form like the following appears, you are connected.



5.3 Connection by remote access

Make the remote connection by the remote access Eurodisplay previously created.

Waiting for the starter connection.

Follow the instructions of charter "Lan connection" . Remember to replace the IP 10.0.100.210 address with 10.0.100.230 if it is necessary.

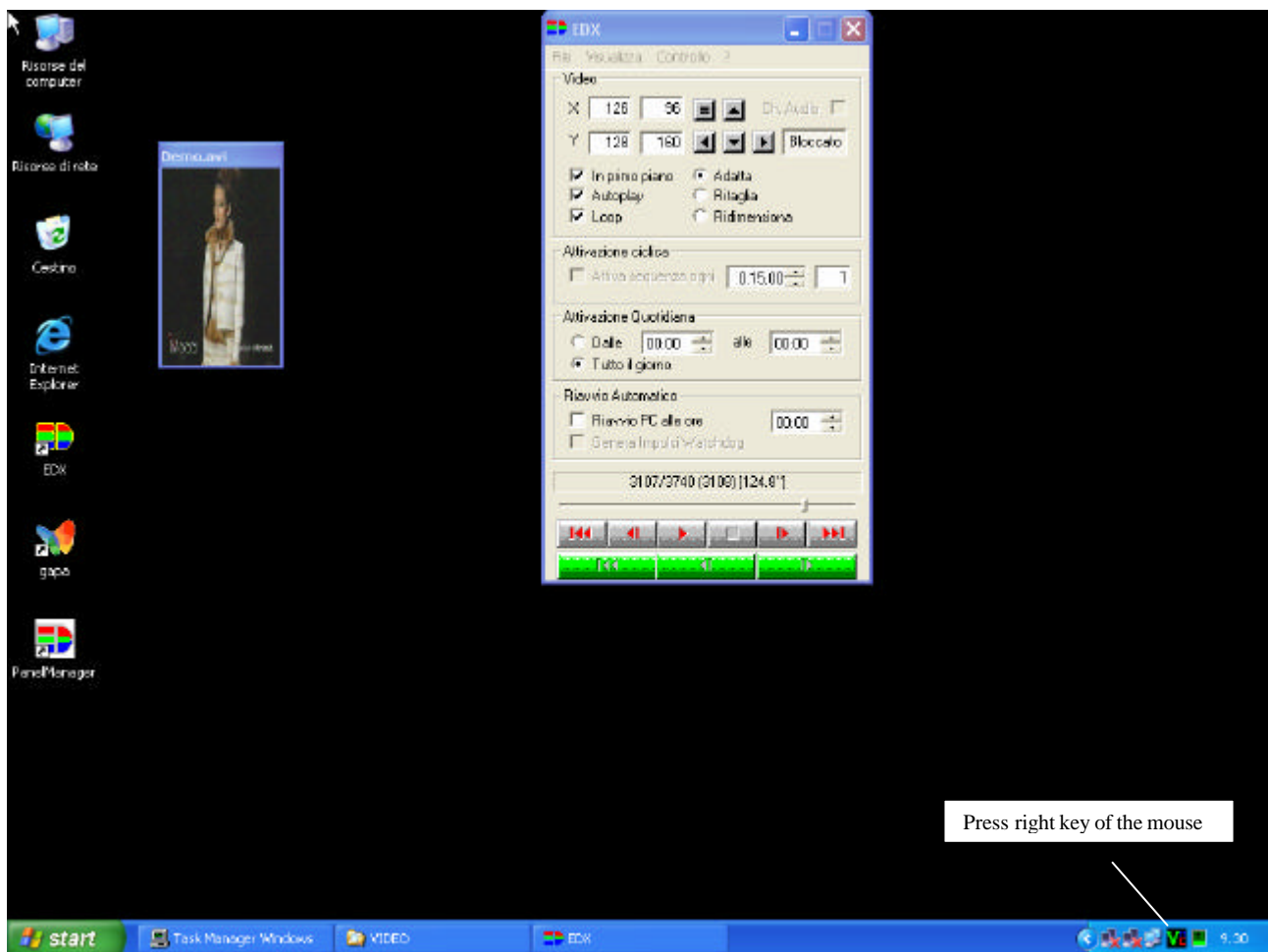
6. Password change

Configured passwords connecting to remote computer can be changed by the following operations.

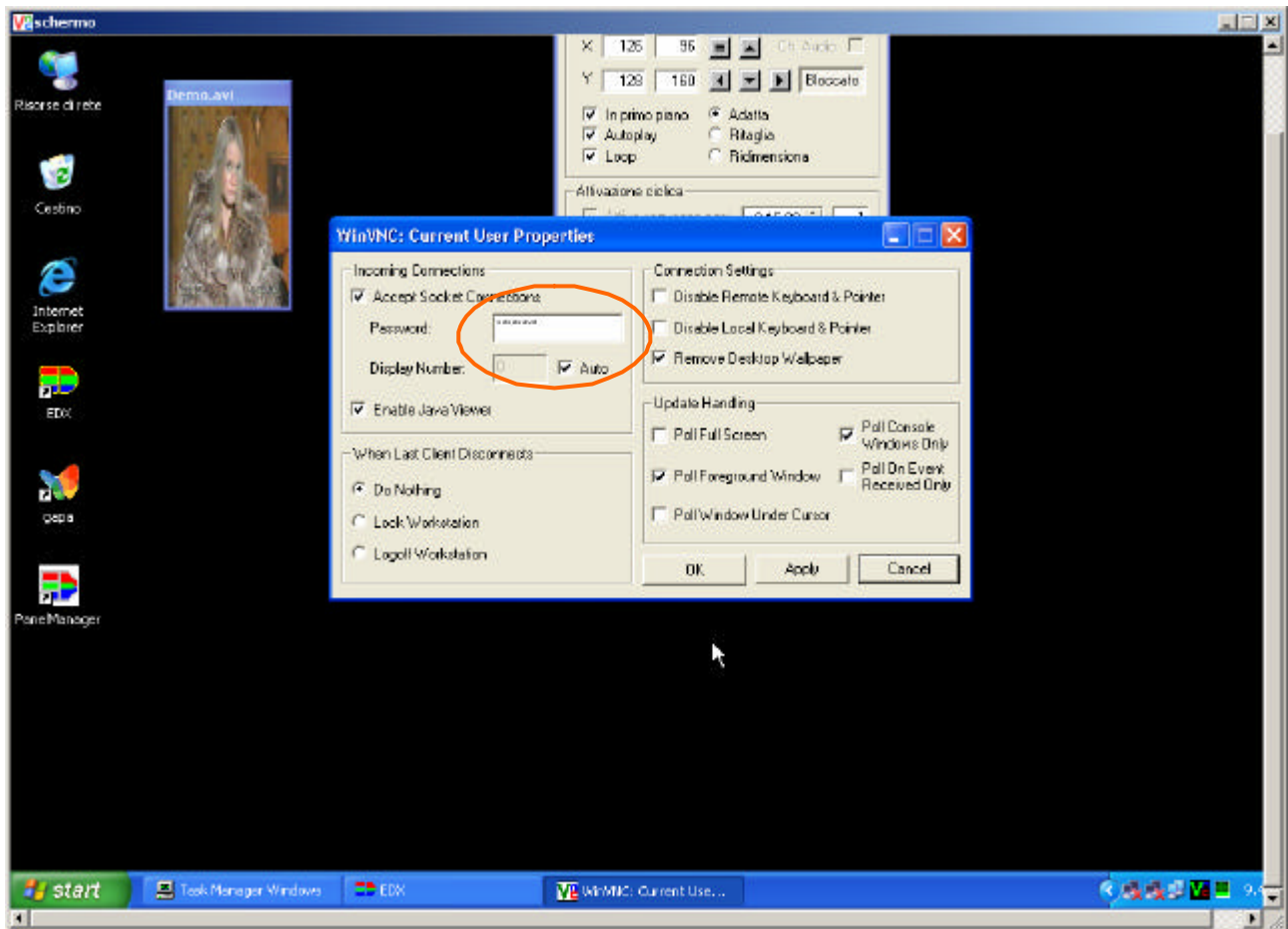
6.1 Vnc Password

To change the connecting password to remote computer it is necessary to execute these following operations:

- 1) Connect to the remote computer by vnc viewer program (see chapter 5.2)
- 2) Select the vc icon down the screen, by the right key of the mouse.



- 3) Select "Properties"
- 4) Set the new password in the field with all the asterisks.

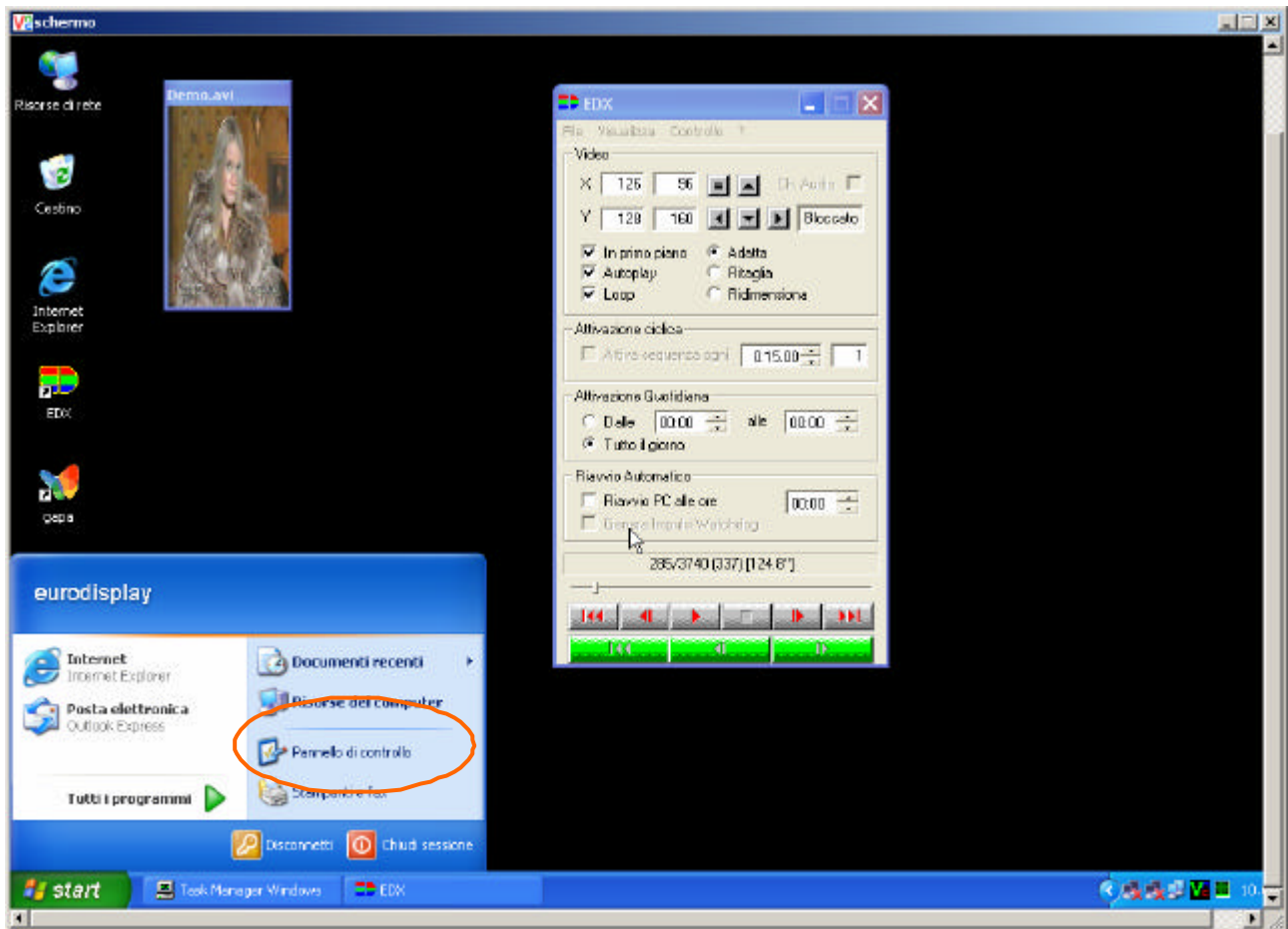


- 5) Push Ok to confirm the operation.
- 6) At the following change it is necessary to introduce a new password.

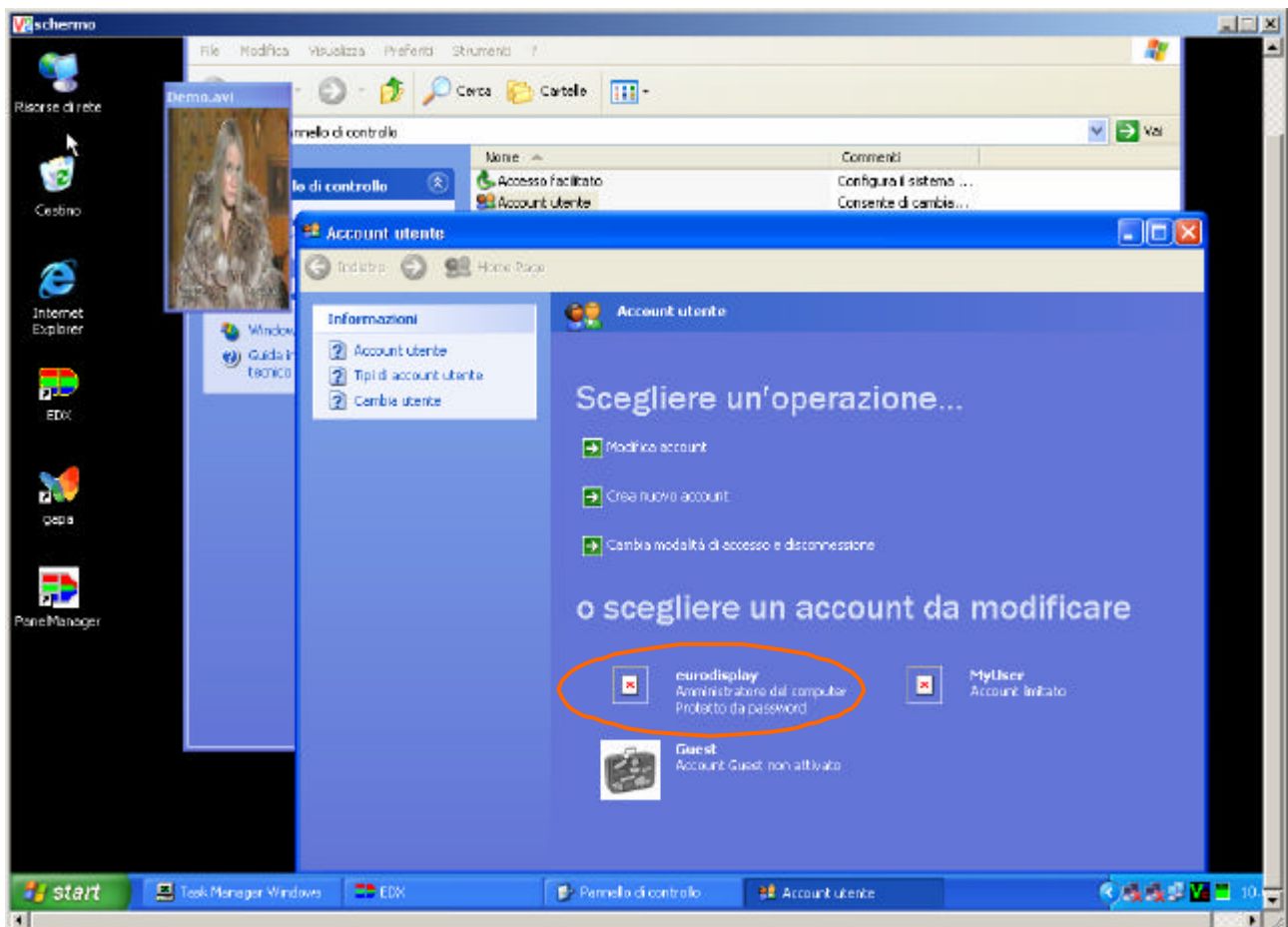
6.2 Ftp password

To change the password used by the Ftp connection it must follow these operations:

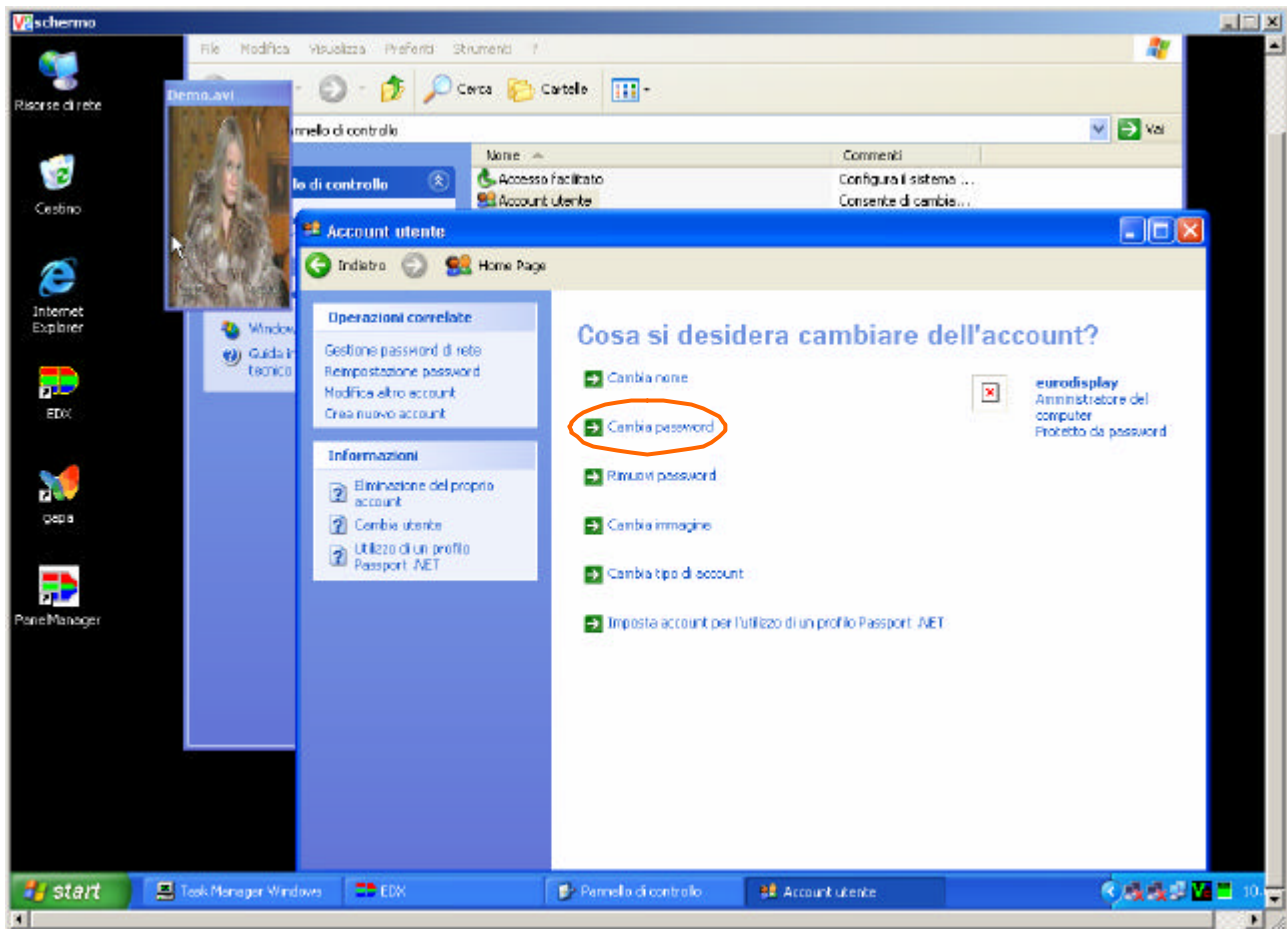
- 1) Connect to remote computer by vnc viewer (see chapter 5.2)
- 2) Select "Start" key – "Control panel"



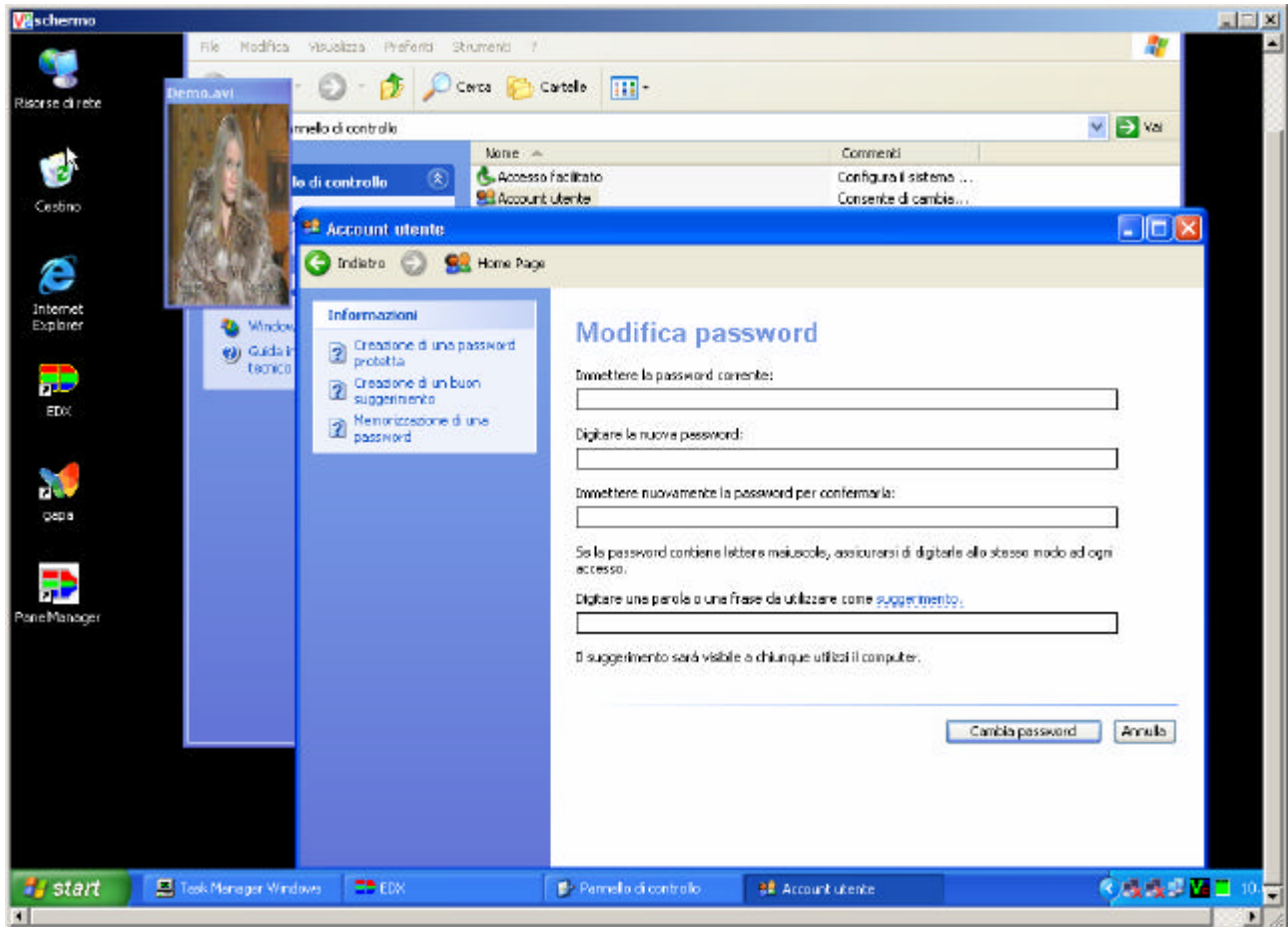
3) Select “User account”



4) Select “Eurodisplay” and after “Change password”



5) Introduce selected fields and after confirm by “Change password” key.



- 6) With the following Ftp connection it is important to remember to change the connecting password.

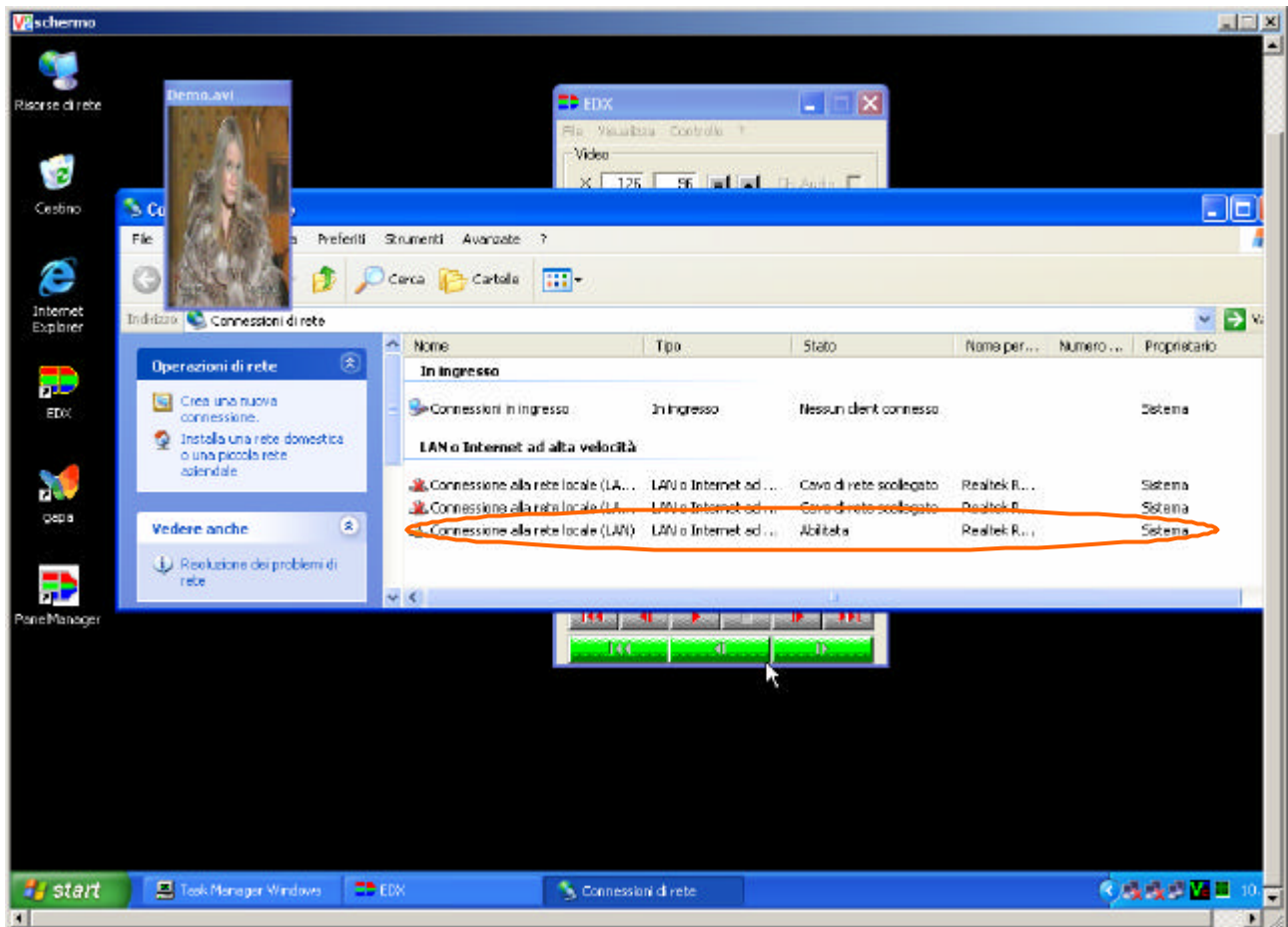
7. IP Change

This practice will be used by people who introduce the “Display” in a local lan already existent. Pc that supervises the display uses three Tcp-IP addresses for the connection by Lan and a group of five IP addresses to remote connection.

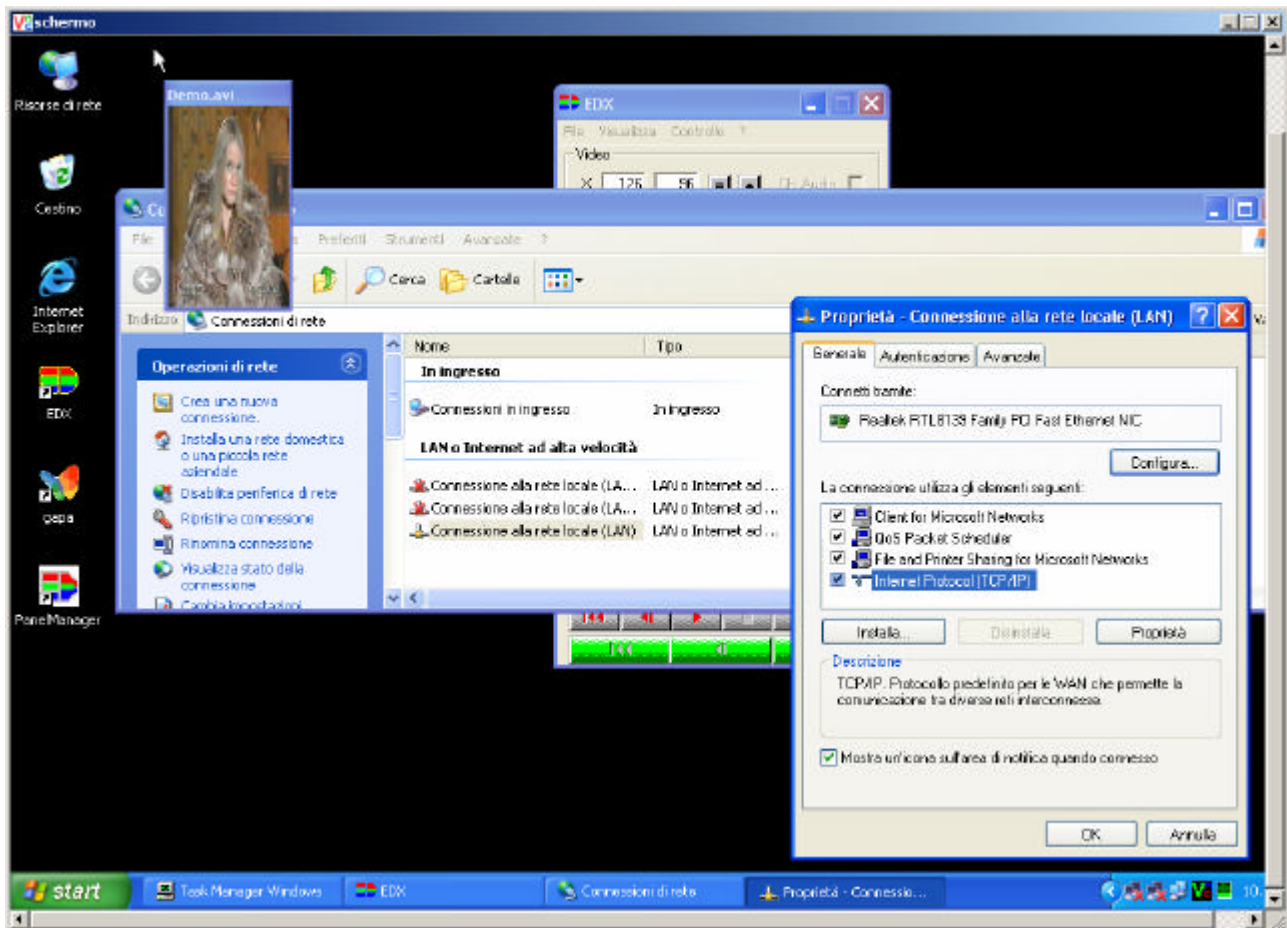
7.1 IP Lan Change

To change the IP address of present lan it is necessary to follow these operations:

- 1) Link to the remote computer by Vnc viewer program (see chapter 5.2).
- 2) Set on “Lan Resource” icons on desktop and with the right key of the mouse select “Proprieties”.



- 3) Set on first lan "Connection to local lan" and press the right key of the mouse; select "Properties".
- 4) Select "Internet protocol(TCP/IP) and after push "Properties" .



- 5) Change IP address.
- 6) Confirm with Ok key.
- 7) Repeat these operations for Lan 2 and 3.

In the case of the lan 1 is link to a ADSL router, it must introduce in the “Properties- internet protocol (TCP/IP) the gateway address assigned by choose manager , and two addresses DNS given by ADSL manager too. (See ADSL contract).

Attention: the active lan must be changed at the end. IP change closes the connection with Vnc viewer program.

7.2 IP “Input connections” change

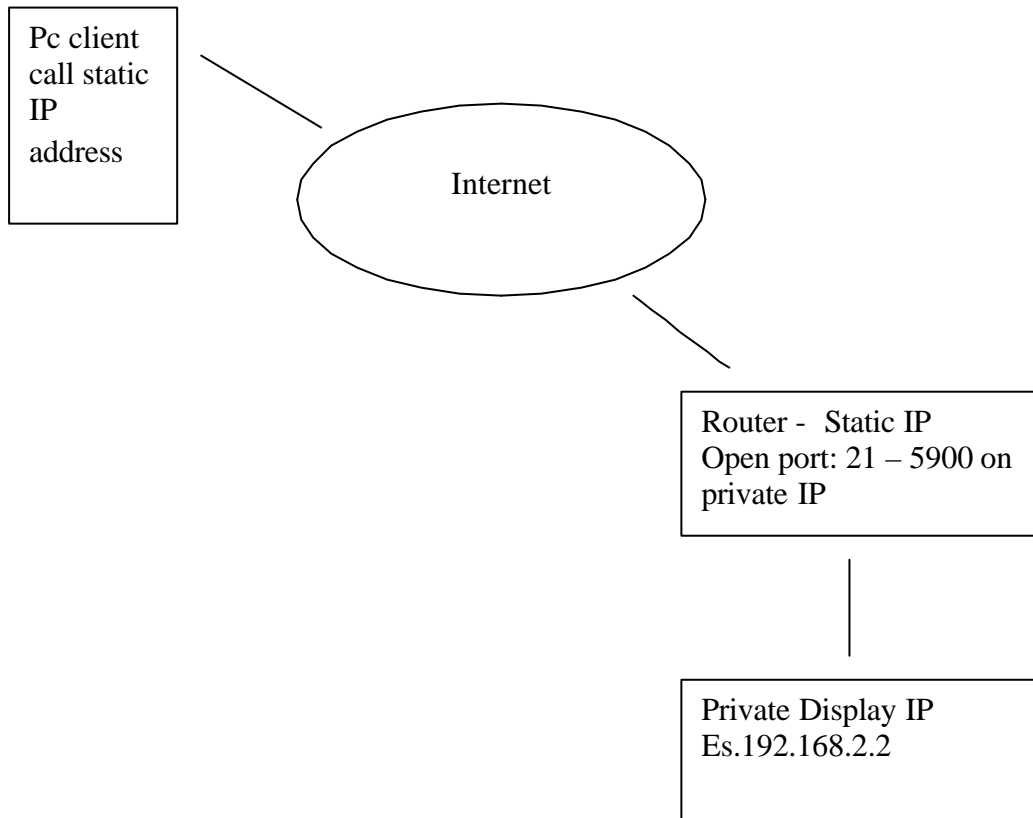
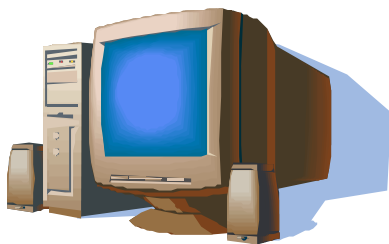
In this menu all the connections that can take place by a remote connection (modem, parallel port, serial port) are grouped. To change this group of addresses (that the manager of remote connections RAS reserves to a similar connection) it is necessary to follow these operations :

- 1) Link to a remote computer with Vnc viewer program (see charter 5.2).
- 2) Set on “Input connections” and select “Properties” with the right key of the mouse.
- 3) Select “Lan”.
- 4) Set on “Internet protocol TCP/IP” and select “Properties”.
- 5) Change the address in “TCP/IP Specifications”
- 6) Confirm by Ok key.

8. Note ADSL

IMPORTANT the following IP port must be opened by ADSL provider.

Service	Port	Ip pc Display
Ftp	21	192.168.2.2
Vnc	5900	192.168.2.2



ATTENTION

All IP addresses view in this character are IP examples.